

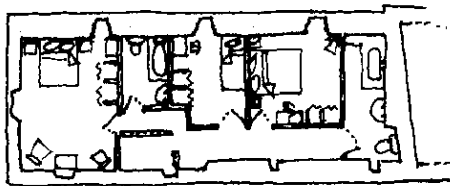
# 24L8AB

Central Dordogne  
nr Le Buisson, Siorac

Elegant 17<sup>th</sup> century Manoir  
and spacious Annexe  
with private POOL

(sleeps 10+10 = 20)

Standing in 15ha (37 acres) of gently rolling grounds overlooking the Dordogne Valley, these excellent properties may be taken together (eg summer) or separately. They share the fine 13.5 x 6m pool (depth 1 to 2.5m), framed by quite entrancing views yet totally secluded. Baker, shops etc and station are at 5km (Le Buisson) and there are many good restaurants nearby (eg Cadouin 9km).

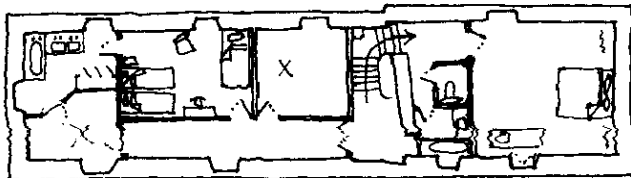


A Le Manoir  
(sleeps 10)

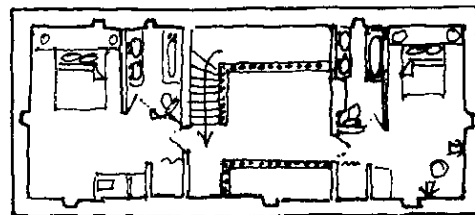
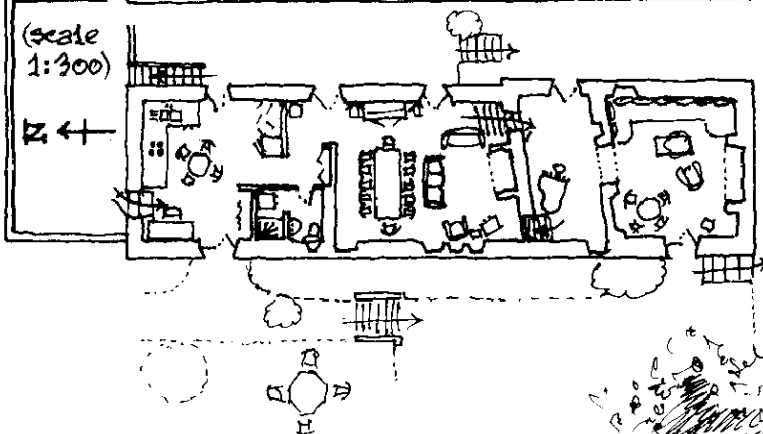
### B Les Cyprès (sleeps 8-10)

The spacious annexe, a former farm building, offers 4 bedrooms, (3 double and twin beds) and 4 bathrooms (2 baths, 2 showers, 4 WCs). Downstairs is a large living room/kitchenette, seating up to twenty, opening to a nice lawn leading to the pool. On the mezzanine are TV, sofa etc. Extra beds for 2+.

(← pool)



(scale 1:300)



1st fl.



2nd fl.  
N  
↑

The Manor house, dating from 1664, provides 5 bedrooms (3 double, 4 single beds) 3 bathrooms (3 baths) and 4 WCs. A well-appointed kitchen opens to terraced lawns E&W and a large patio to E (tables, chairs etc, perfect for all meals) with views to towards pool, and leads to living room (dining table etc), piano room and second sitting room. Equipment and decoration excellent.

Details: Sturge, Bath

